



CENTRAL VALLEY
DENTAL IMPLANT
& ORAL SURGERY INSTITUTE

Dr. Robert Bell Dr. David Smith Dr. Spencer Anderson Dr. Timothy Bunnell

April · May · June



*Happy Birthday
Dr. Robert Bell*

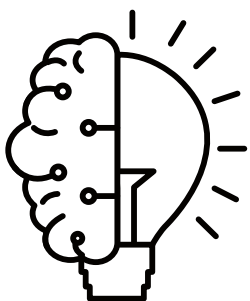
Summer is Coming

At our core, we value people. This includes our patients, referring dentists, and their staff. We strive to personalize all aspects of our communication, from newsletters to social media, and are humbled by the continuous support and patience during changes to our workflow. We appreciate the loyalty of our referring offices and see ourselves as an extension of theirs. Together, we are committed to providing excellent oral health care to our community.



Dr. Bell's experience, ability to explain procedures, and awareness of the patient's health history are outstanding.

-Google Review



Study Club

April 27th, 2023 • Wyndham Hotel
Implants and Oral Surgery Updates

RSVP by April 11th
2 CE Credits



WISDOM TEETH

As we approach the summer months, it's a great time for dentists to remind their patients about the importance of scheduling wisdom teeth removal appointments. With kids out of school for spring break and summer vacation, it's an ideal time for them to come in. It's recommended to have the removal done between ages 17-25 before the roots have fully developed and entwined themselves in the nerves, making removal much more complicated. Not all four teeth have to be removed, and the dentist will assess each case to determine the best course of action. The procedure typically takes less than an hour, and most patients recover within 3-4 days. So, dentists, make sure to encourage your patients to schedule their wisdom teeth removal appointments this summer!

BLUEPRINT WRAP-UP

For our winter BluePrint, a group of general dentists, prosthodontists, and oral surgeons collaborated to evaluate and devise treatment plans for more than 24 cases involving various diseases and remedies. We express our gratitude to all who contributed to our BluePrint event. If you have any inquiries about the event's advantages, please feel free to ask. This event serves as an excellent opportunity to enhance your knowledge and develop confidence in basic to advanced treatments.

THANK YOU TO OUR PARTICIPATING DOCTORS

ALISA MARTIN	IRENE CRUZ
ALYSSA AVILA	JANINE SETTIMI
BRIAN BELL	JORDAN NICKEL
CRISTI-ANA ILIUTA	JOCELYN IVERSON
ELIZABETH ILIUTA	MICHAEL CORTEZ
DARREN RICH	JENNY HE
ASHLEIGH WUNG	

GIVEAWAY

MORGAN WALLEN

INGLEWOOD CONCERT TICKET!

Latex Glove Shooting Contest!

Send a video of you shooting a latex glove into a trashcan from 8 feet away. If you make it, your name gets entered into the drawing! Your entire team can do this challenge! Winners announced May 15th.

Send videos/names to 559-604-5656

Bonus entry if you post it on social media and tag us!

STAY CONNECTED
@centralvalleyoms



CENTRAL VALLEY
DENTAL IMPLANT
& ORAL SURGERY INSTITUTE

Dr. Robert Bell · Dr. David Smith · Dr. Spencer Anderson · Dr. Timothy Bunnell

Happy New Year!

Welcome to our first newsletter of 2023.

In the midst of what is widely recognized as the time to reflect on last year's achievements and look forward to the promise of the new year, we bring you our first newsletter of 2023 - in which we proudly showcase our Straumann Blueprint Program and provide updates on the latest digital advancements in dentistry that are available at our offices.

In an ever-evolving digital landscape, we are committed to embracing change as a means to further enhance the quality of our work and explore new frontiers in the field of dentistry.

As part of our New Year's resolution, we are dedicated to building a strong and engaged community on social media. We invite you to connect with us on Facebook and Instagram @centralvalleyoms to gain a deeper understanding of our approach to dental care and to get to know our team more personally. We would also love to hear about your own resolutions and goals for the year ahead.

Straumann Blueprint

Planning with growth in mind.

As self-proclaimed Straumann devotees - we seized the opportunity to host our own Blueprint lecture with guest speaker Dr. Hunter Dawson.

Our team prepared for this event with confidence knowing it would provide valuable insights and information on the latest developments in implant restorative dentistry, digital workflow, and patient care.

In October of last year, we were pleased to welcome thirteen general dentists to the program. The program focused on identifying implant cases and developing the necessary skills to treat these cases effectively. This opportunity not only allowed our doctors and colleagues to continue to expand their expertise but also enabled us to provide our patients with the highest quality of care.





Digital Dentistry

Advancements in Dentistry

Cone-Beam Computed Tomography (CBCT) is a medical imaging technique that utilizes advanced technology to produce detailed three-dimensional (3D) images of the teeth, jaws, and facial bones. Dentists rely on these images to plan implant placement, diagnose and treat abnormal teeth, evaluate the jaws and face, assess cleft palates, and diagnose caries, endodontic conditions, and dental trauma. CBCT imaging provides a more comprehensive view of the oral and maxillofacial region than traditional two-dimensional (2D) radiographs.

3D Printing or Additive Manufacturing is a technology that enables dentists, laboratories, and companies to produce a wide range of dental items, including crowns, bridges, implants, veneers, molds, retainers, aligners, indirect bonding trays, models, and pre-surgical and surgical guides. By using digital images, 3D printing allows for the creation of personalized dental items and models that are faster and more affordable than traditional manufacturing methods.

Intraoral scanners are devices used by dentists to take digital impressions of the teeth and surrounding oral structures. These digital impressions can be used to create a wide range of dental restorations, including crowns, inlays, onlays, fixed partial dentures, aligners, occlusal devices, and surgical implant guides. Intraoral scanners provide a faster, more comfortable and accurate patient experience than traditional impression methods.



CBCT Scan

Cone Beam Computed Tomography (CBCT SCAN)

CBCT 3D Imaging

Our office utilizes the latest cone beam computed tomography (CBCT) technology to better understand the anatomy of the face, mouth, and teeth. This advanced imaging method offers unparalleled detail of the anatomy, including soft tissue and bone, allowing us to provide more specialized treatment for improved outcomes.

How CBCT Works

Unlike traditional 2-D X-rays, the CBCT machine rotates around the body, capturing multiple images using a cone-shaped X-ray beam to provide a three-dimensional view of the structures. This type of imaging is essential for diagnosing, treating, and preparing for oral and maxillofacial surgery procedures such as dental implant placement and the removal of impacted wisdom teeth.

Radiation and CBCT

As with any X-ray procedure, there is a slight increase in cancer risk with excessive exposure to radiation. However, CBCT machines emit less radiation than traditional CT scanners. We only use them when a more comprehensive image than traditional X-rays can provide is necessary.

Straumann 3D Printer

Achieve success with accuracy and efficiency

We are dedicated to ensuring that our patients receive both exceptional results and a positive experience. To achieve this, we utilize the advanced technology of Straumann's 3D Printer P Series to create dental prostheses, retainers, and other dental devices that are precision-fit for optimal comfort, stability, and flexibility.

The effectiveness of 3D printing in dental applications is contingent upon the expertise of our doctors and technicians. Our team has received thorough training in the use of the equipment, and they possess a comprehensive understanding of all aspects of 3D digital printing. This ensures that our patients receive the highest level of care and the best possible outcomes.



Straumann 3D Printer P Series

3SHAPE TRIOS® INTRAORAL SCANNER



PATIENT COMFORT

Fast, easy to use, and creates documented-accurate digital color impressions.



HIGH QUALITY

Trust in reproducible results and premium quality from Straumann.



ACCURACY

Capable of measuring shades of teeth and adding HD photos to the 3D model.



FLEXIBILITY

Full control and the ability to adapt to meet individual needs.